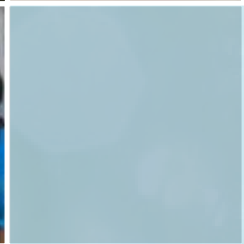



eco-friendly living for sustainable planet



ANNUAL REPORT 2012

ENVIRONMENT & PUBLIC
HEALTH ORGANIZATION





© Environment and Public Health Organization (ENPHO)

**Materials &
Photo Courtesy:**

ENPHO Team

Compiled by:

Ms. Purnima Shakya

Edited By:

Dr. Suman Kumar Shakya, Mr. Prajwal Shrestha

Design & Print:

wps, tel 5555989
email wpsnepal@gmail.com

CONTENTS

ACRONYMS	2
FOREWORD	4
VISION	6
MISSION	7
ORGANIZATIONAL STRUCTURE	8
MILESTONES ...	9
FIELDS OF SPECIALIZATION	10
ACHIEVEMENTS	11
PROGRAM UNIT	12
LABORATORY UNIT	15
PRODUCTS AND SERVICES	17
ENPHI	18
KNOWLEDGE MANAGEMENT AND ADVOCACY	21
PLANNING, MONITORING AND EVALUATION UNIT	24
ADMIN AND FINANCE UNIT	26
THE WAY AHEAD	27
PARTNERS	29

ACRONYMS

BORDA	Bremen Overseas Research and Development Associate
CAWST	Centre for Affordable Water and Sanitation Technology
CBME	Community Based Monitoring and Evaluation
CCNN	Climate Change Network Nepal
CEN	Clean Energy Nepal
CS	Colloidal Silver
DESWAM	Decentralized Solid Waste Management
DEWATS	Decentralized Waste-water Treatment System
DWA	Dutch WASH Alliance
DWSS	Department of Water Supply and Sewerage
ECOSAN	Ecological Sanitation
ENPHI	Environment and Public Health Institute
ENPHO	Environment and Public Health Organization
FCHVs	Female Community Health Volunteers
FY	Fiscal Year
GESI	Gender Equity and Social Inclusion
GSF	Global Sanitation Fund
HHs	Households
ICS	Improved Cooking Stove
IEC	Information Education Communication
ISWM	Integrated Sustainable Waste Management
KAF	Kanchan Arsenic Filter
M&E	Monitoring and Evaluation
MDG	Millennium Development Goal
MUS	Multiple Re-Use System
NAF	Nepal Agro-Forestry Foundation

NBSM	Nepal Bureau of Standard and Metrology
NGI	Norwegian Geotechnical Institute
NGO	Non-Government Organization
NYCA	Nepalese Youth for Climate Action
ODF	Open Defecation Free
P/A	Presence/ Absence
PCIA	Partnership for Clean Indoor Air
PoU	Point of Use
PPME	Project Planning Monitoring and Evaluation
R&D	Research and Development
RC	Resource Centre
RCNN	Resource Centre Network Nepal
RUAF	Resource Centres on Urban Agriculture & Food Security
RWSSFDB	Rural Water Supply and Sanitation Fund Development Board
SODIS	Solar Water Disinfection
SOP	Strategic Operation Plan
SSWRMNA	Sustainable Sanitation and Water Resource Management Network Asia
SWASTHA	Safe Water, Sanitation and Hygiene for All
SWOT	Strength Weakness Opportunities and Threats
VDC	Village Development Committee
WAPIC	Water Pasteurization through Improved Cook Stove
WASH	Water, Sanitation and Hygiene
WATSAN	Water and Sanitation
WSP	Water Safety Plan
WET-C	Water Expertise Training Centre
WHO	World Health Organization

FOREWORD

ENPHO has been providing its services through research and development studies, rain water harvesting, Decentralized Wastewater Treatment System (DEWATS); promotion of Point of Use techniques at school and household levels, climate change initiatives, implementation of sustainable sanitation practices in rural and urban communities. ENPHO research laboratory is also providing services to various stakeholders by analyzing the quality of drinking water, wastewater, air, soil, and other environmental limitations.

The year 2011/12 has been also remarkable year for ENPHO as we continued to grow and expand our services. We further consolidated our efforts in areas such as WASH service delivery, DEWATS, WASH in emergency, water quality, climate change and energy. We joined hands with new partners such as Regional Monitoring and Supervision Office, Pokhara, OXFAM Nepal, Terre des homes, RUAF Foundation and Surkhet Municipality to establish ourselves to promote and implement the concept of SWASTHA (Safe Water, Sanitation and Hygiene for All) throughout Nepal and strengthen ENPHI.

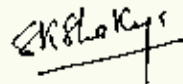
Similarly, ENPHO has revised its strategies and focused its limited human and financial resources to bring the biggest impact on the field of laboratory based research, service delivery and knowledge management programs in environment, public health and WASH sectors. This strategy is developed for giving strategic direction to ENPHO over the period 2012 to 2015. The strategy has been developed through a participatory process and consultation with ENPHO staff and Board members.

ENPHO has still lot of challenges though having amazing opportunities. Competition in sector, turnover of experienced professionals and high expectation of successors are some of the major challenges of the organization. However, its goodwill and strong support of staff are the major strengths to achieve the targets in the last fiscal year.

We would like to express our thanks to all ENPHO staff. We also express our gratitude to all Board & General Members, donors and partners who provided their continuous moral and sensible support to ENPHO.



Dr. Kunjani Joshi
Chairperson
ENPHO



Dr. Suman K. Shakya
Executive Director
ENPHO



VISION

Creating Eco-Societies

Introduction

Established with the vision of creating eco-societies in 1990, ENPHO is a service-oriented, scientific, national NGO that envisages contributing in sustainable community development by combining research and actions through the integrated programs in the areas of environment and public health. ENPHO runs a government accredited laboratory and promotes eco-friendly technologies/options such as wastewater treatment through constructed DEWATS, SODIS and ECOSAN toilets.

ENPHO develops and promotes integrated community based approaches endorsing safe water, sustainable sanitation, solid waste management, hygiene behavior and improving indoor air, and environmental and air quality monitoring to create healthy societies. Furthermore, knowledge-based education and advocacy campaigns help on achieving ENPHO's mission.



**Develop and Promote Appropriate Technologies
to enable Societies become Eco – friendly.**

MISSION



ENPHO is cooperating with government organizations on meeting possible national MDGs and other various national targets on safe water and sanitation. So far, ENPHO has contributed on water, waste water, sanitation, women empowerment and gender mainstreaming through its various programs.

In order to extend its reach, ENPHO has also initiated programmes in emergencies, disaster risk reduction, climate change and energy. Also to scale up our efforts, we are developing local capacities through Environment and Public Health Institute (ENPHI).

Targets

- 💧 Conduct research and develop appropriate technologies that are acceptable to local communities using local resources.
- 💧 Demonstrate eco-friendly technologies and practices.
- 💧 Develop and implement effective strategies to promote eco-friendly technologies.
- 💧 Network with partners for coordination and advocacy.
- 💧 Enhance organizational capacity.
- 💧 Develop local capacities through ENPHI.

ORGANIZATIONAL STRUCTURE



MILESTONES ...

- 1990 Water Quality Monitoring of Bagmati River and Kathmandu's Water Supply System
- 1992 Initiated Air Quality Monitoring for the first time in Nepal within Kathmandu Valley
- 1994 Production and distribution of PIYUSH® Chlorine Solution
- 1997 Introduced Constructed Wetlands for Wastewater Treatment System in Nepal
- 2000 Production of ENPHO test kit, Arsenic Testing and Mitigation activities initiated in the Terai
- 2001 Initiated Research on SODIS and ECO-SAN
- 2003 Received Award for Kanchan™ Arsenic Filter at World Bank Development Marketplace
- 2005 Environment Award from Ministry of Environment, Science & Technology
- 2006 Carried out Country Environment Analysis for the World Bank
- 2007 Initiation of Integrated Community based WATSAN Programme & Declaration of ODF at community level
- 2008 Scaling up of waste water treatment system at municipal level and integration of bio-gas system
- 2009 Received "Partnership for Clean Indoor Air (PCIA)" Award for Air Quality Improvement
- 2009 Establishment of Environment & Public Health Institute (ENPHI) within ENPHO
- 2009 Initiation of Paschim Paaila- A Youth Campaign against Diarrhea Epidemic in Western Nepal
- 2009 Establishment of Nepal Node for Sustainable Sanitation
- 2010 ODF Declaration at VDC level
- 2011 ECO-SAN poster attained the 1st prize in pre-SACOSAN IV in Colombo, Sri-Lanka

FIELDS OF SPECIALIZATION

- 💧 Air Quality Assessment (Outdoor and Indoor)
- 💧 Baseline survey and study
- 💧 Capacity building program, trainings & training materials
- 💧 Climate Change
- 💧 Community Development & Consultation
- 💧 Decentralized Solid Waste Management (DESWAM)
- 💧 Decentralized Wastewater Treatment System (DEWATS)
- 💧 Designing constructed wetland for wastewater treatment
- 💧 Disaster Risk Reduction
- 💧 Drinking water quality management
- 💧 Environmental Impact Assessment
- 💧 Field Study and Impact Assessment
- 💧 Forestry and Conservation
- 💧 Health and Sanitation Education
- 💧 Health Impact Assessment
- 💧 Lake and Pond Restoration
- 💧 Medical Waste Management
- 💧 Natural Resource Management
- 💧 On-site Wastewater Disposal
- 💧 Promotion of appropriate technologies for environmental management
- 💧 R&D, Knowledge Management and Advocacy
- 💧 Research on water and wastewater
- 💧 Solid Waste Management
- 💧 Wastewater Management
- 💧 Water Supply and Sanitation

ACHIEVEMENTS

ENPHO believes in working for the community in coordination with local individuals and government bodies. During the fiscal year 2011/12, ENPHO has managed on contributing safe water and better sanitation through 22 projects among which 6 have been successfully completed. It has been reported that 3 additional projects are under pipeline and will commence in the upcoming fiscal year.

The completed projects on community based safe water, sanitation and hygiene have benefitted more than 2580 individuals, 600 HHs and 10 schools. Apart from that, the ongoing projects have successfully served more than 3000 households (HHs) benefitting over 68,075 individuals during the FY 2011/12. ENPHO is proud to successfully declare ODF in Chitwan district, 5 clusters of Tikapur Municipality (Samitipur, Pasupati Tole, Jamunapur, Jhanjhatpur and Banngaun) and 2 clusters of Gulariya Municipality (Surajpur and Purano Ghabisha Tole) under SWASHTHA Project (Supported by European Union and UN-Habitat); Sahare VDC under Su-Swastha Project (supported by USAID and EAWAG) and 2 wards of Birendranagar Municipality (ward 3 and 12) under SWASH project (supported by DWA, the Netherlands) within 2012. Under the knowledge management, ENPHO launched Awareness Raising Toolkit at the central level with the support from the Asia Foundation.

ENPHO has been continuously promoting household water treatment through PoU options, production of Piyush+ and Piyush, preparation of Water Safety Plans (WSP) and various arsenic mitigation projects all over Nepal. This has benefitted approx. 2, 95,220 individuals till the preparation of this report.

Various WASH forums, trainings, workshops and meetings organized by ENPHO/ ENPHI have benefitted more than 20,000 students, youths, professionals and technical experts during 2011/2012. ENPHO further plans to extend its reach all over Nepal and at international level with the support from its members and partners.

PROGRAM UNIT

Safe Water

ENPHO believes that everyone should have access to safe drinking water at an affordable price. ENPHO is promoting integrated community based water supply systems, application of water safety plans and strengthening the supply and demand for appropriate point-of-use water treatment options. In this context, ENPHO has helped develop and promote

simple technologies such as PIYUSH chlorine solution, Solar Water Disinfection (SODIS), Rain Water Harvesting Systems, Colloidal Silver Filters, Bio-Sand Filters and Kanchan Arsenic Filters at both household and institution levels all over Nepal through projects supported by USAID, EAWAG, UN-HABITAT, RAIN Foundation, CAWST and JICA.



ENPHO is involved in research, development and promotion of arsenic mitigation measures. ENPHO has developed Kanchan Arsenic Filter (KAF) which has successfully proved to remove arsenic, turbidity, iron, smell and pathogens from drinking water. Apart from that, ENPHI has been taking lead on developing local entrepreneurs for assembling and marketing of filters and creating demand through awareness campaigns.

Sustainable Sanitation

ENPHO believes on promoting sustainable sanitation systems that are economically viable, socially acceptable, and technically and institutionally appropriate; and protect the environment and the natural resources. These



include Total Sanitation Campaigns, promotion of Decentralized Waste Water Treatment Systems (DEWATS), Decentralized Solid Waste Management (DESWAM), Integrated Sustainable Waste Management (ISWM), Multiple Re-Use System (MUS), Ecological Sanitation (ECOSAN) toilets and biogas systems through various projects to strengthen sustainable sanitation all over Nepal.

ENPHO has successfully scaled up promotion of Decentralized Waste Water Treatment Systems (DEWATS) with the support of BORDA. As a result, many agencies including hotels, hospitals and private sectors have requested ENPHO to provide technical support to establish the system. Similarly, the promotion of DESWAM and MUS have been supported by UNDP, DWA and RUAF respectively.

Community based WASH

ENPHO promotes integrated community-based safe water, sanitation, and hygiene (WASH) through various projects. The major aim is to work with the community for making them environment friendly and healthy through SWASTHA approach -Safe Water, Sanitation and Hygiene for All. This could be achieved by placing water safety plans, PoU options, sustainable sanitation, Water and Sanitation (WATSAN) plans, ODF declaration, indoor air quality control and hygiene promotion.

The integrated WASH approach has been widely used in the projects supported by the European Union, UNHABITAT, USAID, EAWAG, World Bank,



RWSSFDB, Asia Onlus, Water Aid Nepal, NRN Canada, and Helping Hands for Hope Canada, Terre Des Homes Foundation, DWA and Give 2 Asia. These projects have set the target to benefit more than 92000 people within eight districts of Nepal, that include Kathmandu, Lalitpur, Bhaktapur, Kavre, Surkhet, Banke, Bardiya and Jhapa.

Climate Change Adaptation and Disaster Risk Preparedness

ENPHO focused on research and programs on climate change mitigation, adaptation and disaster risk preparedness within Kathmandu Valley during the FY 2011/12. The programmes were supported by RUAF, UNHABITAT, Kathmandu Metropolitan City Office, UKAID and OXFAM Nepal. These programmes have been targeted for WASH stakeholders and local people.



During the research, WASH assessment at 7 IDP campsites within Kathmandu Valley was conducted for WASH emergency response. According to the study, three levels of camps have been identified in and around Kathmandu, which includes 57 small, 5 medium and 2 large camps.

LABORATORY UNIT

Since 1990, ENPHO has been contributing on testing and monitoring drinking water, wastewater, natural water, compost, soil, food, noise, and air quality analysis through its well-equipped laboratory for research, education and advocacy purpose. ENPHO Lab is accredited by Nepal Bureau of Standard and Metrology (NBSM) under the NEPLAS criteria based on ISO 17025.



ENPHO lab is equipped with sophisticated instruments like UV-visible spectrophotometer, atomic spectrometer, gas chromatograph, high power liquid chromatography, double distillation unit, four digital electronic balance, pH meter electric conductivity meter, digestion units, ambient air quality sampler, stack monitoring set, indoor air quality equipment, various types of oven, furnace and microbiology section with sophisticated instruments like filtration unit, different range of incubators and refrigerator.

During the FY 2011/12, 3362 samples were analyzed on drinking water, 103 on waste water, 33 on soil, and 65 on urine, food and other analysis while 21 were contributed on laboratory research.





Besides analysis, ENPHO laboratory is also engaged in R&D and has supported three researches this FY. These include, “Comparison of the capacity of colloidal silver coated candle filters, with different colloidal silver coating and flow rates to remove E.Coli and total coliforms”; “Nutrient removal of waste water by using algae culture test results and its applicability in Nepal” and “Bagmati river water quality monitoring in three seasons: pre-monsoon, monsoon and post monsoon”.

Apart from that four research and development programs on urine application, biochar application, and water quality testing and arsenic testing have been conducted with the support and coordination with Water Aid Nepal, NGI/ NAF and RWSSFDB respectively. They are intended to benefit local consumers and professionals.



PRODUCTS AND SERVICES

ENPHO has been studying and developing water testing kits and water purifying products. ENPHO laboratory produces simple, portable and low cost water testing kits such as ENPHO water field test kit, arsenic field test kit, P/A vial test, H₂S test kit for coliform detection and free residual chlorine test kit. ENPHO water field test kits include the parameters such as iron, hardness, nitrate, phosphate, nitrite, and alkalinity test kit depending upon the need of various water testing programmes. ENPHO also provides additional reagents for refilling as per the requirement. Altogether 7078 water testing kits were sold during the FY 2011/12 which is tabulated below.



Type of water testing kit	Number of kits sold
FRC	130
P/A Vial	6805
Arsenic Test Kit	25
Water Test Kit	74
Individual Water Test Kit	23
Water Test Kit Reagent	21

ENPHI

ENPHI is the learning platform set by ENPHO to design and deliver professional training programmes with the sole objective of providing innovative tools for capacity building at community and organizational level. Professionals and decision makers are especially focused so that these empowered individuals can bring about changes through proper delivery of environmental services at local and national level.



The trainings and capacity building programs organized by ENPHI are usually short term, ranging from one day to one month. Ready-made as well as tailor-made courses are available to suit the needs of different clients at local, national and international levels.

Water Expertise and Training Center (WET-C)

ENPHI has been actively involved in the concept of WET-C since 1994 with the support from Helping Hands of Hope, CAWST and NRN Canada. The main concept is on providing leadership, trainings, technical consulting, institutional capacity building, entrepreneurship development, and networking services through regional resource centers to capacitate local NGOs, government



agencies and community groups in water and sanitation sector. The WET-C has targeted to benefit 23,000 individuals and 700 WET-C clients to support on achieving MDG goal for Nepal.

Sustainable Sanitation and Water Resource Management Network Asia (SSWRMNA)

With the support of GIZ, various training courses on Sustainable Sanitation and Water Management (SSWM), low cost sanitation, and knowledge transfer have been conducted through ENPHI. This has benefited professionals all over Nepal.

Awareness Raising Toolkit

Awareness Raising Toolkit on Environmental Issues with case studies on WASH and IAP has been published with the support from the Asia Foundation in the FY 2011/12. It has been intended to benefit field level planners and community workers on raising public awareness and mobilizing communities for behavioral change.



Training of Local Masons and Entrepreneurs on Construction of Marketing Sanitation for GSF Programme in Nepal

The training programmes for local masons and entrepreneurs on construction and marketing of sanitation services has been approved by UNHABITAT and will commence by the next FY at five districts of Nepal, viz. Arghakhachi, Bajura, Bardiya, Sindhupalchowk and Sunsari. The programme has planned to benefit 125 locals on manufacturing, construction, maintenance and marketing of sanitation facilities as well as on developing basic entrepreneurship skill.



Other Training Programs

Altogether 24 trainings have been organized by ENPHI with the support of various projects all over Nepal. The main goal was to build capacity on WASH facilities for local people, school teachers, FCHVs, entrepreneurs and professional experts from various organizations. During the FY 2011/12, more than 750 individuals benefited from these trainings.



Workshops/ Seminars

Altogether 44 workshops, seminars and meetings have been organized with the support of various projects all over Nepal. Almost all these programmes have been aimed to benefit the local individuals and stakeholders through WASH intervention. During the FY 2011/12, more than 1750 attended the programmes.



KNOWLEDGE MANAGEMENT AND ADVOCACY

Knowledge-based education and advocacy campaigns are one of the core activities of ENPHO which is handled by the Resource Center (RC). The RC collects, stores, and disseminates information and uses them to conduct education and advocacy campaigns on environment and public health.

Knowledge Management

ENPHO updates information and knowledge products in library and on website (www.enpho.org) in a regular basis, publishes monthly e-bulletin and various learning IEC materials, conducts interaction programs and invites international visitors for better knowledge management and sharing.

It has been reported that 13 international visitors all over the world have visited ENPHO this fiscal year.



During the FY 2011/12, IEC materials such as calendar, brochures, posters, pamphlets, booklets, training manuals, awareness raising toolkit, forex on WASH, and token of love, T-Shirts and other various products were published in coordination with the running projects. A copy of these materials is stored in the library. Apart from that, library has a collection of books, journal and reports which are catalogued using an international system and maintained by the main server networking system.



Similarly five interaction programs have been organized on WASH and emergency issues by ENPHO/ Paschim Paaila Youth Network while ENPHO RC organized three programs on climate change in association with Nepalese Youth for Climate Action (NYCA), Clean Energy Nepal (CEN), Climate Change Network Nepal (CCNN) and Cyberlink.



For better knowledge management, ENPHO has been networking with WASH RCNN, relevant stakeholders and interested individuals to share information; coordinate and implement joint activities, research and academic studies on the promotion of integrated WASH and other environmental concerns.



Advocacy

As ENPHO's mission is to promote appropriate technologies and to enable communities become environment friendly, knowledge-based education and advocacy campaigns are one of the core activities of ENPHO handled by the RC. RC is a member of the Water, Sanitation and Hygiene -Resource Centre Network Nepal (WASH-RCNN), which aims to establish an information network among national and international organizations working in the WATSAN sector.

ENPHO has established Regional Resource Center at Rupandehi in coordination with FSCN; at Surkhet in coordination with DWSS, WASH-RCNN, SNV-Nepal, UNICEF, and WHO; and at Pokhara in coordination with DWSS, UNICEF, RVWRMP, WASH-RCNN and CAWST for better advocacy on safe water and sustainable sanitation at the regional level.



ENPHO/Paschim Paaila has also been involved in advocacy campaigns. These campaigns have been more focused on WASH, environmental health and disasters/ epidemics as social concern through youth led initiatives. Various sensitization and advocacy regarding different issues related to WASH has been conducted at different sites and dynamics through campaigns, dramas, wall paintings, mass orientations, WASH forums and exhibitions. This has benefited more than 16,000 school children and youths in the FY 2011/12.

PLANNING, MONITORING AND EVALUATION UNIT

Strategic Operation Plan (2012-2015) The SOP of ENPHO was finalized after three series of meetings. The first was conducted on 12th June 2011 for organizational SWOT analysis and structural framework; 16th June 2011 for draft strategic planning workshop; and finalized on 6th June 2012. The SOP 2012- 2015 has been developed to meet the need of environment-related technology and support the national targets on WASH. Under the three major strategic interventions; program, research & laboratory and organizational management; ENPHO has set its goals and strategic objectives to promote WASH, ENPHI and other cross-cutting issues on Climate Change, food security and renewable energy, wherever possible.



Project Planning, Monitoring and Evaluation Framework and Guidelines

PPME framework and guidelines was prepared in June 2011 and implemented at project level since August 2011. Quarterly and annual monitoring along with mid-term and final evaluation have been mandatory in all projects. Community based M&E (CBME) have been used at some projects on an experimental basis for 2012. However, all the trainings and programs need to be evaluated for future improvements.



WASH Policy ENPHO WASH policy focuses basically on five thematic areas: safe water, better sanitation, improved hygiene, solid waste management and reduction of indoor air pollution. SWASTHA approach, which delineates Safe Water, Sanitation and Hygiene for All, is one of the guiding principles of the policy. The major goal of this policy is to contribute to measurable improvements in public health and quality of life through efficient, effective implementation of WASH services and protection of the environment. In this regard, WASH policy specifically endorses three core ideologies, namely: Sustainability; Equity and Inclusion and User-friendly. The specific objectives include -



Objective 1 - to ensure access of adequate and safe water and basic sanitation facilities **Objective 2** - to ensure sustained hygiene behavior changes

Objective 3 - to develop innovative and sustainable technologies and systems to address the challenges related to WASH

Objective 4 - to build up capacity of local institutions, community people in WASH and its proper management **Objective 5** - to contribute to achieve national target and millennium development goal (MDG) on WASH sector.



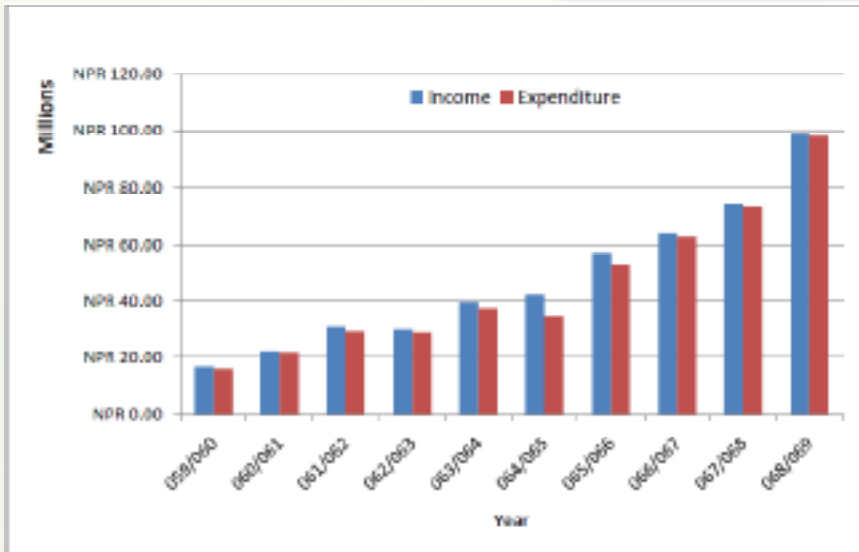
Gender Equity and Social Inclusion (GESI)

Policy ENPHO believes that promotion of GESI is very crucial for achieving maximum impact on social and economic condition of community people since it is an integral part of community development process and should be integrated with water and sanitation programs. The policy reflects the underlying principles of ENPHO's policy and objectives in GESI promotion.



ADMIN AND FINANCE UNIT

ENPHO's total income for the year 2011/12 was NRs. 98,991,834.24 (US\$ 1,117,289.33). This is a 33.85% increase compared to the total income of 2010/11. The total expenditure, on the other hand, was NRs. 97,931,711.04 (US\$ 1,105,324.05). This is an increase of 33.87% compared to the previous year's expenditure. The trend in income and expenditure over the past 10 years is shown in the graph. ENPHO follows its financial regulations to manage finances and revenues. Financial records are kept up to date by using FAMAS software with regular external annual auditing.



THE WAY AHEAD

In the upcoming year, ENPHO will continue to build on its strengths to establish itself as a center of excellence in the areas of water quality, safe water, sustainable sanitation and hygiene, while expanding its involvement in other environment related issues such as climate change, energy and Disaster Risk Reduction. ENPHO has developed its three-year Strategic Operation Plan 2012-2015 that will guide the organization towards reaching its goals at program, laboratory-research, organizational and institutional level.

ENPHO will strengthen its organizational capacity, particularly in the areas of planning, monitoring and evaluation, communication and project management by providing training opportunities for its staff and establishing systems for their effective functioning. ENPHO will focus to promote integrated programs such as SWASHTHA, Su-SWASTHA, WASH-J, SWASH and build ENPHI as a professional center for research and capacity building, particularly focusing on WASH sector.

In the area of water quality

- Promote water safety plans through research, capacity building and technical support
- Develop, demonstrate and disseminate PoU water treatment options
- Extensive promotion of Piyush and Piyush+
- Declare community as Safe Water Zone

In the area of Service delivery

- Scale up promotion of environmental and sustainable sanitation systems
- Ensure improved access to safe drinking water
- Promote integrated water optimization technologies
- Promote waste/wastewater management & reuse through implementation of DEWATS/DISWATS/ DESWAM
- Enhance knowledge on hygiene behavior and sanitation practices

In the area of sustainable sanitation

- Implement community based sanitation in various areas and assist communities on declaring ODF zones
- Establish ENPHO as a knowledge node for sustainable sanitation and promote ecological sanitation
- Demonstration and promotion of DEWATS in business sector
- Promote SWASTHA communities with access to safe water, sanitation facilities, ICS and hygiene behavior
- Promote WASH during emergencies

In the area of ENPHI

- Establish RC in two development regions
- Capacity building to different stakeholders on WASH issues
- Provide professional training and research related services

In the area of Knowledge management and Advocacy

- Establish itself as a Centre of Expertise and Knowledge on safe water and sustainable sanitation
- Conduct variety of training programs
- Be an active member of various national and international networks to share knowledge, coordinate activities and conduct advocacy campaigns
- Mobilize youth, media and local communities for advocacy campaigns

In the area of Research & Development

- Strengthen the performance of ENPHO's laboratory
- Improve the quality control procedures in lab
- Conduct research on nutrient recycling at the Horticulture Centre and other areas
- Complete research on innovative technologies such as WAPIC and CS candles
- Continue research on performance of DEWATS

PARTNERS

NATIONAL

- Alternative Energy Promotion Center
- Amaghar Foundation
- AMDA-MINDS Nepal
- Birendranagar Municipality
- Bharatpur Municipality
- Biogas Support Partnership Nepal
- Butwal Municipality
- Centre for Integrated Urban Development (CIUD)
- Central Horticulture Center (CHC)
- Clean Energy Nepal (CEN)
- Department of Urban Development and Building Construction (DUDBC)
- Department of Water Supply and Sewerage (DWSS)
- Dhulikhel Municipality
- Friends Service Council Nepal
- Gularia Municipality
- Hetauda Municipality
- Ilam Municipality
- Integrated Development Society Nepal
- Jhaukhel VDC, Bhaktapur
- Kalyan VDC, Surkhet
- Kalamamai Municipality
- Kaprichaur VDC, Surkhet
- Kathmandu Metropolitan City
- Kathmandu UpatyakaKhanepani Limited
- Khokana Village Development Committee
- Kirtipur Municipality
- Lalitpur Sub-Metropolitan City
- Lumanti
- Madhyapur Thimi Municipality
- Maiti Nepal
- Mehelkuna VDC, Surkhet

- 💧 Ministry of Environment
- 💧 Ministry of Physical Planning and Works
- 💧 Municipal Association of Nepal (MuAN)
- 💧 National Trust for Nature Conservation
- 💧 Nepal Bureau of Standards and Meteorology
- 💧 Nepal Red Cross Society
- 💧 Nepal WASH Alliance
- 💧 Nepal Water Supply Corporation
- 💧 Nepalgunj Municipality
- 💧 NGO forum for Urban Water & Sanitation (NGOFUWS)
- 💧 Oxfam GB Nepal
- 💧 Park Village Hotel, Pokhara
- 💧 Poverty Alleviation Fund (PAF)
- 💧 Practical Action Nepal
- 💧 Ramghat VDC, Surkhet
- 💧 Ramgram Municipality
- 💧 Rotary Club of Mid Town
- 💧 Rural Water Supply and Sanitation Fund Development Board (RWSSFDB)
- 💧 RWSSP-WN, Pokhara
- 💧 Sahare VDC, Surkhet
- 💧 Siddharthanagar Municipality
- 💧 Siddhipur VDC
- 💧 Social Welfare Council
- 💧 Solid Waste Management and Resource Centre
- 💧 Solutions Benefiting Life
- 💧 Solid Waste Management and Resource Mobilization Center
- 💧 Summit Hotel
- 💧 The Coca-Cola Company/ Bottlers Nepal
- 💧 Tikapur Municipality
- 💧 Total Management Services
- 💧 Urban Environment Improvement Project
- 💧 Urban Environment Management Society (UEMS)
- 💧 Village Development Committees (VDCs)
- 💧 Water, Sanitation and Hygiene – Resource Center Network (WASH-RCNN)-Nepal
- 💧 Western Regional Hospital, Pokhara
- 💧 Women Environment Preservation Community (WEPCO)

INTERNATIONAL

-  American Embassy
-  Asia Arsenic Network (AAN)
-  Asian Development Bank (ADB)
-  ASIA-ONLUS, the Association for International Solidarity in Asia
-  Australia Youth Ambassadors for Development (AYAD)
-  Bremen Overseas Research and Development Association (BORDA), Germany
-  Center for Affordable Water and Sanitation Technology (CAWST)
-  Center for International Studies and Cooperation
-  Center for Science and Environment, India
-  Consortium of DEWATS Dissemination (CDD), India
-  Department for International Development (DFID), Nepal
-  DISVI international, Italy
-  Dutch WASH Alliance
-  Engineers without Borders
-  ETC Foundation, the Netherlands
-  European Commission
-  Give2Asia
-  Helping Hands for Hope, Canada
-  Indian Embassy
-  IRC International Water and Sanitation Centre, the Netherlands
-  Japan International Cooperation Agency (JICA)
-  Japan Water Forum
-  Non Residential Nepali – Canada
-  OXFAM Nepal
-  PLAN International
-  Pure Water's: International Water Purification Program Switzerland, Zurich
-  Rainwater Harvesting Implementation Network Foundation (RAIN), the Netherlands
-  RUAF Foundation, the Netherlands
-  Rural Village Water Resource Management Program - FINNIDA
-  Sandia Laboratory, USA
-  SEECONGmbH, Switzerland
-  SIMAVI, the Netherlands
-  SNV Nepal
-  Solutions Benefitting Life

- 💧 Solvatten AB, Sweden
- 💧 Sustainable Sanitation Alliance (SuSanA)
- 💧 Swiss Federal Institute for Environment Science and Technology (EAWAG/SANDEC), Switzerland
- 💧 Terre Des Hommes Foundation (TDH), Switzerland
- 💧 The Asia Foundation
- 💧 United Nations Children's Fund (UNICEF)
- 💧 United Nations Development Program (UNDP)
- 💧 United Nations Human Settlements Program (UN-HABITAT)
- 💧 United States Agency for International Development (USAID)
- 💧 Urban Development through Local Efforts/ GIZ
- 💧 WASTE, the Netherlands
- 💧 Water Aid Nepal (WAN)
- 💧 World Bank (WB)
- 💧 World Health Organization (WHO)
- 💧 World Vision International-Nepal
- 💧 World Wildlife Fund Nepal

ACADEMIC

- 💧 Academy for Educational Development
- 💧 BOKU University, Vienna, Austria
- 💧 Kathmandu University (KU)
- 💧 Lincoln School
- 💧 Massachusetts Institute of Technology (MIT), USA
- 💧 Nepal Engineering College
- 💧 Pokhara University
- 💧 Sandia Laboratory, USA
- 💧 School of Environmental Management and Sciences (SchEMS)
- 💧 Stockholm Environment Institute, Sweden
- 💧 Tribhuvan University
- 💧 University of Cambridge, London
- 💧 University of Kyushu, Japan
- 💧 University of Yamanashi, Japan

MEMBER IN DIFFERENT CIVIL SOCIETY AND TECHNICAL FORUM

- Member of Consortium for DEWATS dissemination (CDD) network (informal network to promote and disseminate Decentralized Basic Needs Services (DBNS) at South Asia)
- Coordinating organization of NGO Forum for Kathmandu Valley Water Supply and Sanitation
- Core member in Coalition for Clean Environment (CCE)
- Sub-committee member of National Steering Committee on Arsenic for preparation of IEC material on Arsenic
- Subcommittee member of National Steering Committee for preparation of Interim National Policy on Arsenic in Drinking Water
- Technical committee member on Drinking Water Quality for NBSM
- Member of expert group for preparation of As testing protocol formulation - NAST/National Arsenic Steering Committee
- Technical Committee Member for different environmental quality and lab issues for NBSM
- Member for Development of Drinking Water Quality Standard, DWSS
- Member on Coordination Committee Small Town Water Supply & Sanitation Project (DWSS)
- Network member in Resource Center Network Nepal (RCNN)

Environment and Public Health Organization (ENPHO)

110/25 Aadarsha Marg, New Baneshwor

G.P.O. Box 4102, Kathmandu, Nepal

Tel: +977-1-4468641/4493188

Fax: +977-1-4491376

Email: enpho@enpho.org

Website: www.enpho.org

